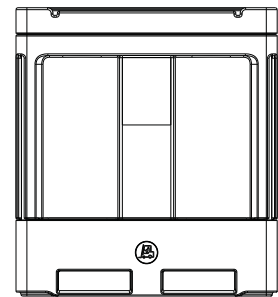
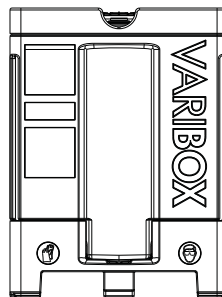
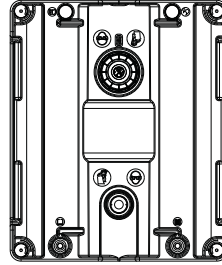


# VARIBOX®



Specification	VARIBOX® FC 1000	VARIBOX® FC 800	Version 2.5
Gross capacity	1025 l	850 l	
Nominal capacity	1010 l	835 l	
Width	1000 mm	1000 mm	
Length	1200 mm	1200 mm	
Height	1325 mm	1160 mm	
Nett height (stacking)	1310 mm	1145 mm	
Inlet height	1290 mm	1125 mm	
Stacking height	2635 mm	2305 mm	
Stacking load	2080 kg	1700 kg	
Weight	122 kg	111 kg	
Transport quantity	52 per truck	52 per truck	
Screw cap	150 mm; EPDM gaskets (optional: Viton)		
Vacuum relief vent	Automatic vacuum relief vent (120 l/min) in 150 mm screw cap		
Overpressure vent	High capacity overpressure vent (80 l/h @ ΔP 12 mbar) in 150 mm screw cap		
Extractor tube	Quick connection extractor tube: TriSure CDS1 (20 l/min)		
Optional quick connections extractor tube and return: Colder NS4 (2,5 l/min)	Optional quick connections extractor tube and return: Colder NS4 (2,5 l/min)		
Prepared for extractor tubes: AS QC; Micromatic (C)DV; Colder DQ Pro	Prepared for extractor tubes: AS QC; Micromatic (C)DV; Colder DQ Pro		
Level sensor	Low level sensor and/or high level sensor		
Colour	Light blue		
Material inner container	Polyethylene (LLDPE), recyclable		
Material outer container	Polyethylene (LLDPE), with steel reinforcement, recyclable		
Material cover	Polyethylene (LLDPE), recyclable		
Material pallet	Recycled polyethylene (LLDPE), recyclable		
DIBt approval number	Allgemeine bauaufsichtliche Zulassung (abZ) Z-40.21-534		
UN certification number	UN 31HH1/Y/**-/NL/TCPI-PROMENS3-140531/3750/2028		
Standard liquid approvals	Maximum density / hydraulic test pressure		
Water	1900 kg/m <sup>3</sup>	110 kPa	
Wetting solution	1600 kg/m <sup>3</sup>	110 kPa	
n-Butyl acetate	1600 kg/m <sup>3</sup>	110 kPa	
White spirit	1600 kg/m <sup>3</sup>	110 kPa	
Acetic acid	1600 kg/m <sup>3</sup>	110 kPa	
Nitric acid 55%	1600 kg/m <sup>3</sup>	110 kPa	
Approved: Nitric acid 62% (max. 2 years)	1400 kg/m <sup>3</sup>	110 kPa	
Approved: Sopuroxid 15. (contains 15 % Peracetic acid)	1200 kg/m <sup>3</sup>	100 kPa	
*Tradename of SOPURA, Rue de Trazegnies 199, 6180 Courcelles, België		Technical subjects to change, all dimensions approximately	